

DATE:
TO:

ISO 9001

CERTIFIED

shindaiwa

**LOW-NOISE DIESEL-POWERED
AC GENERATOR**

DG250MI-400

SPECIFICATIONS

CHAPTER 1: GENERAL

CHAPTER 2: EQUIPMENT SPECIFICATIONS

ATTACHED DRAWINGS

- APPEARANCE
- GENERATOR WIRING
- ENGINE WIRING

SHINDAIWA KOGYO CO., LTD.

6-2-11, Ozuka-Nishi, Asaminami-Ku, Hiroshima, 731-3167, Japan

Chapter 1 General

1. Standards

The designs and the productions are in conformity with:

- (1) Japan Industrial Standards
- (2) Electricity Academy Corporation - Electricity Standard Research Association Standard (JEC)
- (3) Japan Electric Industries Corporation Standard (JEM)
- (4) Japan Combustion Generating Equipment Corporation
- (5) Ministry of Construction (Low Noise Type Construction Machinery Standard)
- (6) Ministry of Construction (Construction Machinery Gas Emission Regulation Standard)

2. Design Conditions

- (1) Installation Place: Inside/Outside
- (2) Ambient Temperature: -15-+40°C
- (3) Humidity: Less than 80%
- (4) Altitude: Less than 300meter (Sea Level)

3. Test and Check

The test shall be done for the complete workable unit of Diesel Engine and Portable Generating Unit.

- (1) Checking Items
 - a) Insulation and Dielectric Tests
 - b) Starting
 - c) Protection Devices Working Test
 - d) Voltage Deviation and Speed Variation: 1/4, 2/4, 3/4 and 4/4 Load
 - e) Load Test: 4/4 Load 30 minutes

4. Painting

- (1) Painting specifications and color are the manufacturer's standard

SPECIFICATION

Item	Model	DG250MI-400	
AC generator		Brushless, 3-Phase synchronous AC generator	
Frequency	(Hz)	50/60	
Rated output	(k VA)	20/25	
	(kW)	16/20	
Rated voltage	(V)	400/440	
Rated amperage	(A)	28.9/32.9	
Number of polarity	—	4	
Rated power factor	—	0.8 (lagging)	
Single Phase output	(V)	100/110	
	(A)	Terminal 15Ax1	
	(A)	Receptacle 15Ax2(total 15A)	
Engine Model	—	ISUZU AA-4LE1	
Type	—	4-cycle,water-cooled,swirl chamber type	
Number of cylinder	—	4	
Bore x stroke	(mm)	85x96	
Displacement	(L)	2.179	
Rated output	(kW)	19.1/23.5	
Rated revolution speed	(min ⁻¹)	1500/1800	
Fuel	—	Diesel fuel (JIS K2204,class 1 to 3)	
Fuel consumption Note1	(L/hour)	4.2/5.3	
Lubricating oil type	—	Class CD or better, SAE30	
Lubricating oil capacity	(L)	8.5 (Effective 2.5)	
Lubricating oil consumption Note2	(L/hour)	0.02	
Coolant capacity	(L)	8.6	
Battery	—	75D31R	
5 hour capacity	(Ah)	60	
Fuel tank capacity	(L)	65	
Equipment dimension L×W×H	(mm)	1550×650×890	
Mass	Dry weight	(kg)	566
	Amount weight		641

Note1, 2: The indicated values were obtained under normal operating condition at 75% load.
Use the numerical value as reference.

Chapter 2 Equipment Specifications

1. Diesel Engine

Model: Isuzu AA-4LE1

Displacement: 2.179 L

Rated Output/Rated Speed: 19.1kW {26.0PS}/23.5kW{32.0PS}
: 1500/1800min⁻¹{rpm}

Fuel: Diesel Fuel ASTM No. 2 or Equivalent (Heavy Oil A to be optional)

Fuel Filter: Paper Filter

Automatic Air Extraction: Standard Accessory

External Fuel Changeover: Standard Accessory

Battery: 75D31R (12V-60AH)

2. 3-Phase Synchronous Generator

1) Alternator

Model: Rotating Field, Self-Ventilation (JCO), Protection (JP20)

Output: 20.0/25.0 k VA (16.0/20.0kW)

Rate: Continuous

Voltage: 400/440V

Current: 28.9/32.9A

Frequency: 50/60Hz

Speed: 1500/1800min⁻¹

Pole: 4 Poles

Power Factor: 0.8 Lagging

Exciting Method: Brushless, AC Exciter

Wiring: Star, 3-Phase 4-Wire

Insulation: Stator Wiring Class F

: Rotor Wiring Class F

Standard: JIS, JEM, JEC

2) Characteristic

Voltage Deviation: Less than $\pm 1.0\%$ for the nominal value

: Transient Values to be less than 20% (100%kVA, Power Factor 0.4)

Over-speed Endurance: 2 minutes of 120% of the rated speed

Wave Distortion: Less than 2% (3-Phase, Line to Line, No Load)

Generator Efficiency: More than 85%

Insulation Resistance: More than 5M Ω

Dielectric Insulation: 1500V for 1 minute or 1800V 1 second

3. Structure

1) Beds (bottom columns) and Vibration Proof Device

Alternator is coupled directly with engine and they are installed on the bed through vibration proof device (Rubber Pad and Angle).

2) Low Noise Sound-Proof Enclosure (Bonnet)

The structure is that the inside of the bonnet is sound-proof treated and you can lift up the alternator and the engine together with the beds by using a lifting lug.

Sound Level: 65dB (A)/7m (No Load 1800 min⁻¹)

3) Fuel Tank

The fuel tank is made of steel and incorporated with the pipe type fuel level gage and the fuel level alarm device.

Capacity: 65L

4. Control Devices, Gages and Protection Devices

1) Control Device

Breaker: Circuit Breaker (Rate 600V 50A)

: Circuit Breaker (Rate 600V 15A)

Exciter Circuit: Automatic Voltage Regulator (F/V Characteristic)

Current Leakage Shut Off Device: 30mA 0.1 second (3-Phase Circuit only)

2) Gages (Displays)

AC Volt Meter: 0-600V

AC Ampere Meter: 0-50-150A

Frequency Meter: 45-65Hz

Hour Meter: 9999.9Hr

Oil Pressure Gage

Water Temperature Gage

Preheat Lamp

Disorder Display Lamps: High Water Temperature, Low Oil Pressure, Insufficient Charging, Low Fuel Level, Air Filter Clog, Battery Fluid Level

Voltage Adjuster: Adjustable Range; Below-10%- and over +5%

Panel Light

Panel Light Switch

Emergency Stop Button

Tachometer: hour meter incorporated

3) Protection Device

Item	Set Value	Display	Trip	Shut-Down
Low Oil Pres.	98.1kPa	○	-	○
High Water Temp.	110°C	○	-	○
Insufficient Fuel	Balance 25%	○	-	-
Insufficient Charging	-	○	-	-
Over Current	50A	○	○	-
Current Leakage	30mA 0.1sec.	○	○	-

4) Output Terminals Plate

R, S, T and O output terminals, 2 (two) receptacles of auxiliary power 100/110V 15A x 2 (total 15A) and 1 (one) 15A 1-Phase output terminal set

5. Dimension and Weight

Length: 1550mm

Width: 650mm

Height: 890mm

Dry Weight: 566kg

Outfitted Weight: 641kg

6. Accessories

Grounding Rod 1 piece

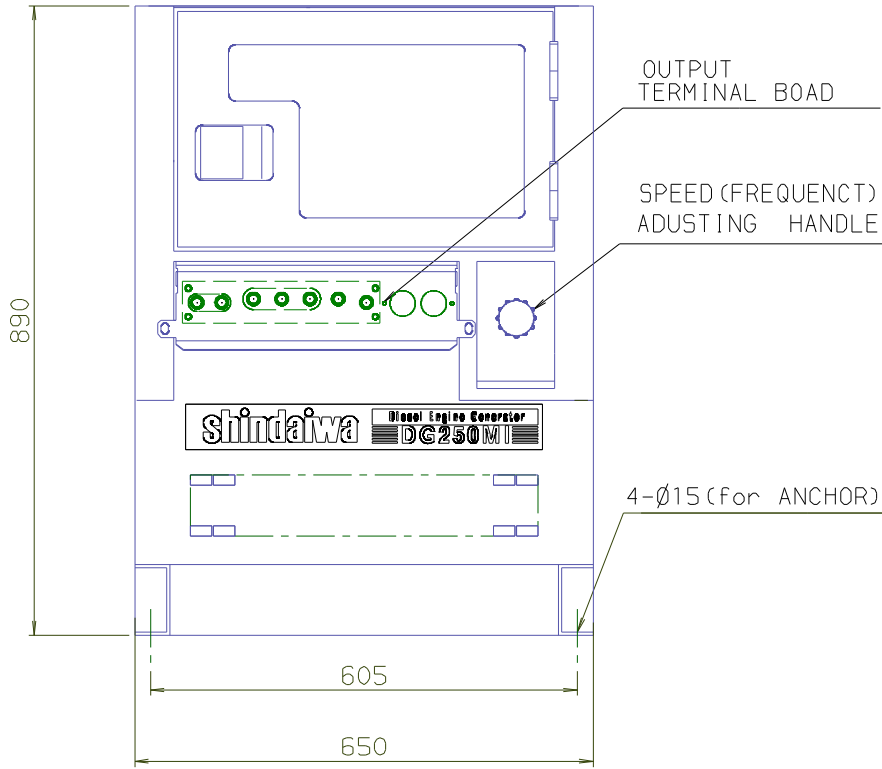
Fuse 10A 1 piece, 20A 1 piece

Instruction manual

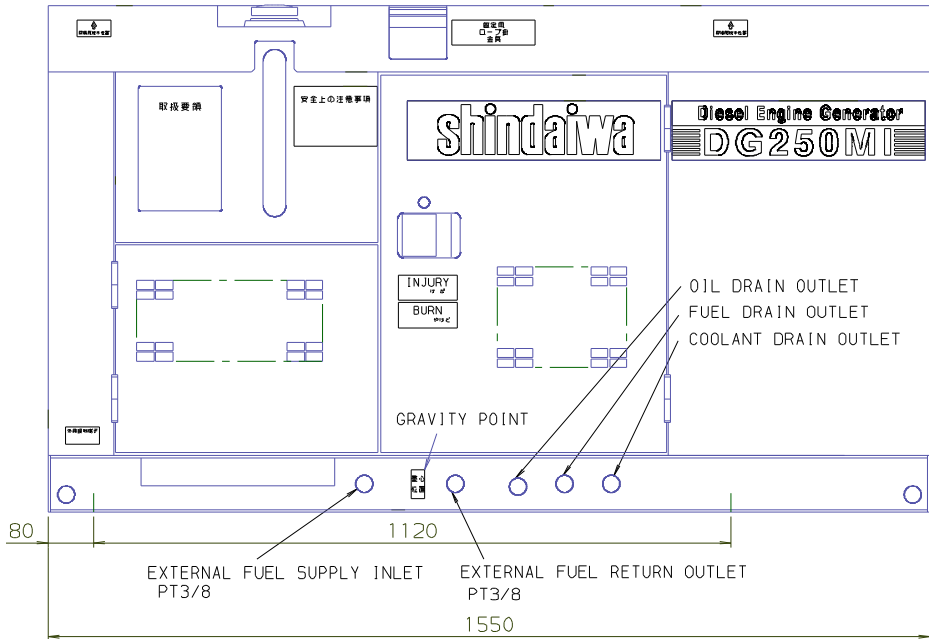
Manual, engine

• **APPEARANCE**

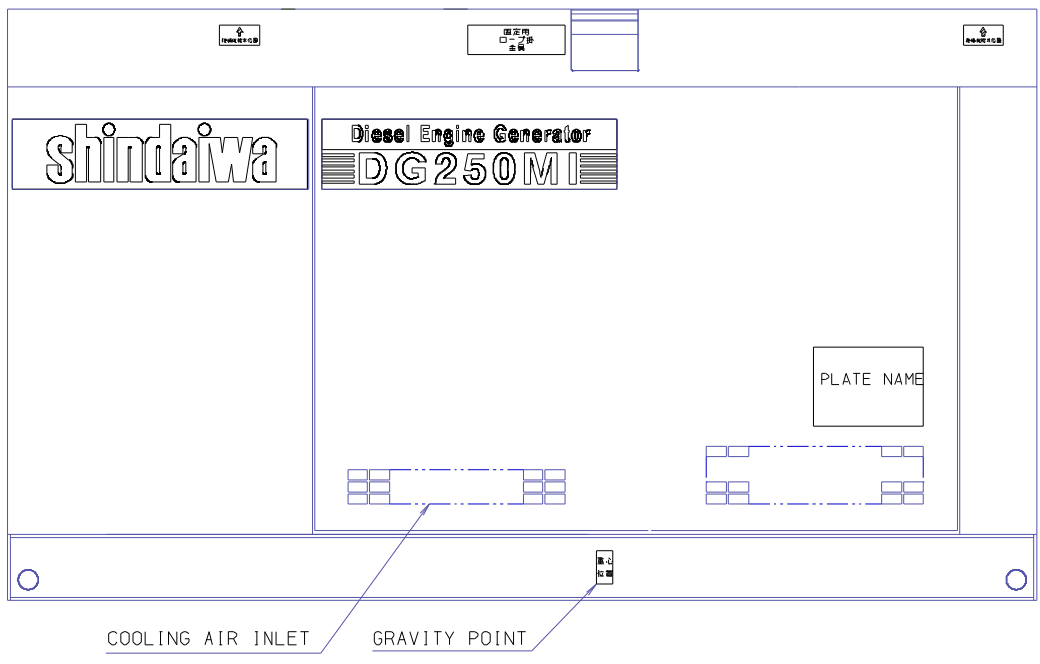
FRONT VIEW



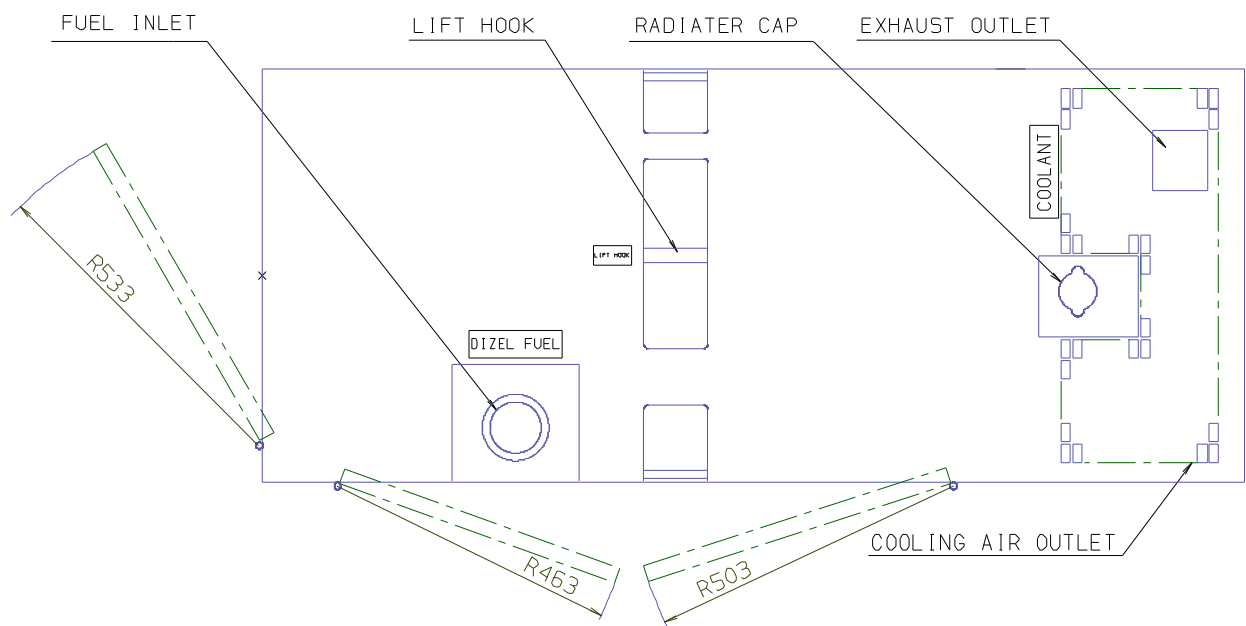
RIGHT SIDE VIEW



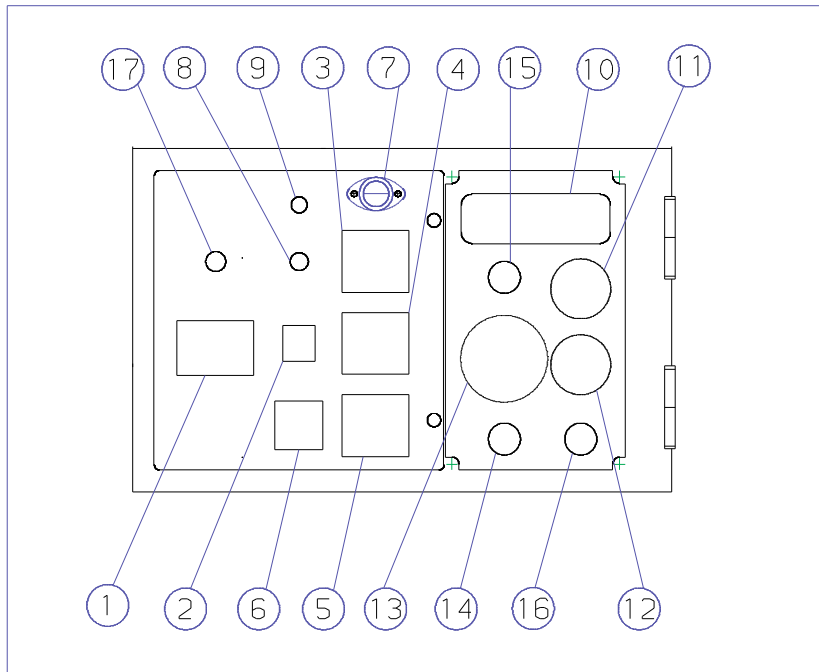
LEFT SIDE VIEW



TOP VIEW



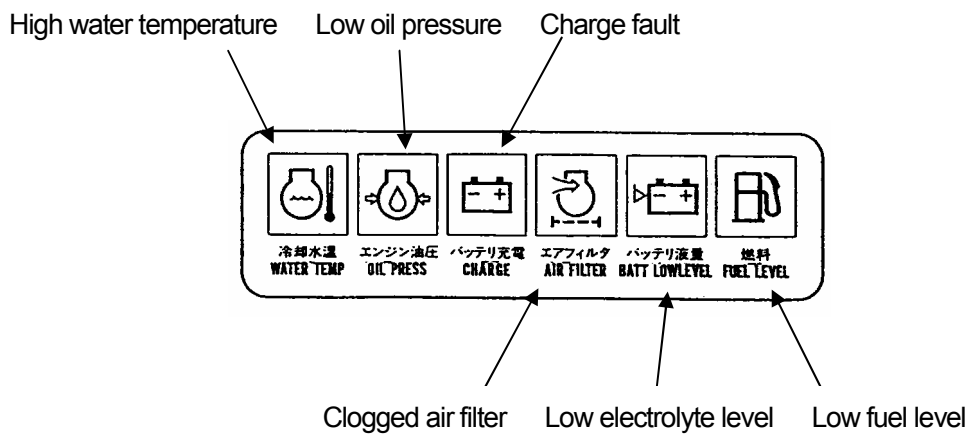
CONTROL PANEL



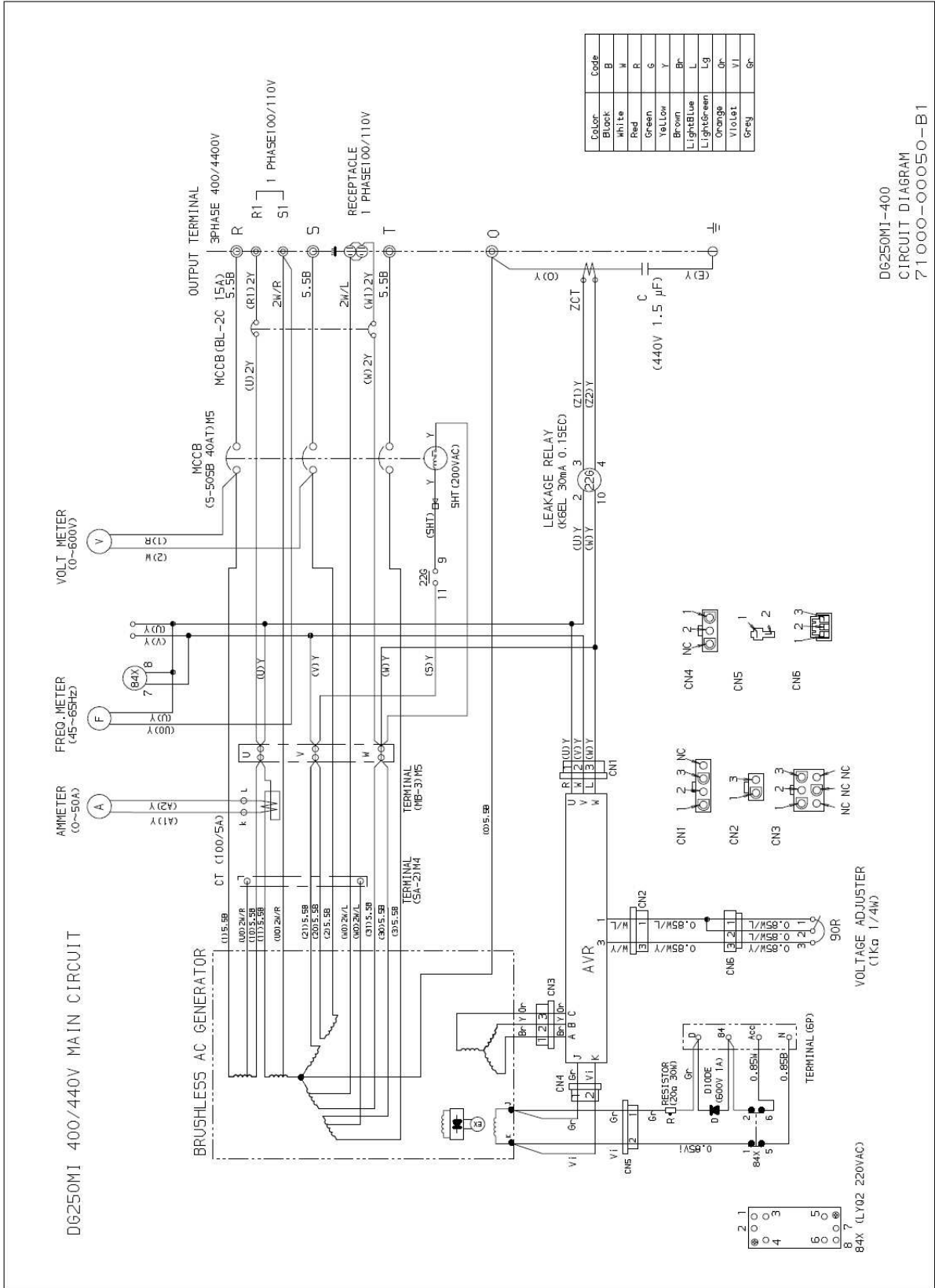
NO.	Name	Description of function
1	3-phase circuit breaker	Turns the power supply to load equipment ON (closed) and OFF (open).
2	1-Phase circuit breaker	Turns the power supply to load equipment ON (closed) and OFF (open).
3	Voltage meter	Indicates voltage.
4	AC ampere meter	Indicates phase current.
5	Frequency meter	Indicates electricity frequency.
6	Earth leakage relay	Detects electric leakage in the 3 phase,4wire output, and turns the circuit breaker OFF when activated
7	Panel light	Illuminates control panel surface.
8	Voltage adjustment dial	Used to adjust voltage.
9	Panel light switch	On/off switch
10	Warning indicator : NOTE	Lights when an equipment malfunction occurs.
11	Coolant temperature gauge	Indicates temperature of the engine coolant.
12	Oil pressure. gauge	Indicates lubricating oil pressure.
13	Tacho meter with hour meter	Indicates rotating speed of the engine, and indicates operating hours of the generator unit.
14	Pre-heating indicator	The indicator lights when the key switch is set to the [ON] position, and starts pre-heating.

NO.	Name	Description of function
15	Emergency stop switch	When the switch is pressed, stops an engine operation.
16	Starter switch	OFF: stops engine operation. ON: supplies electricity for control operation, and starts pre-heating. START: starts an engine operation
17	Electricity indicator lamp	Indicates generated electricity when the engine is in operation and generating.

Detail drawing of warning indicator

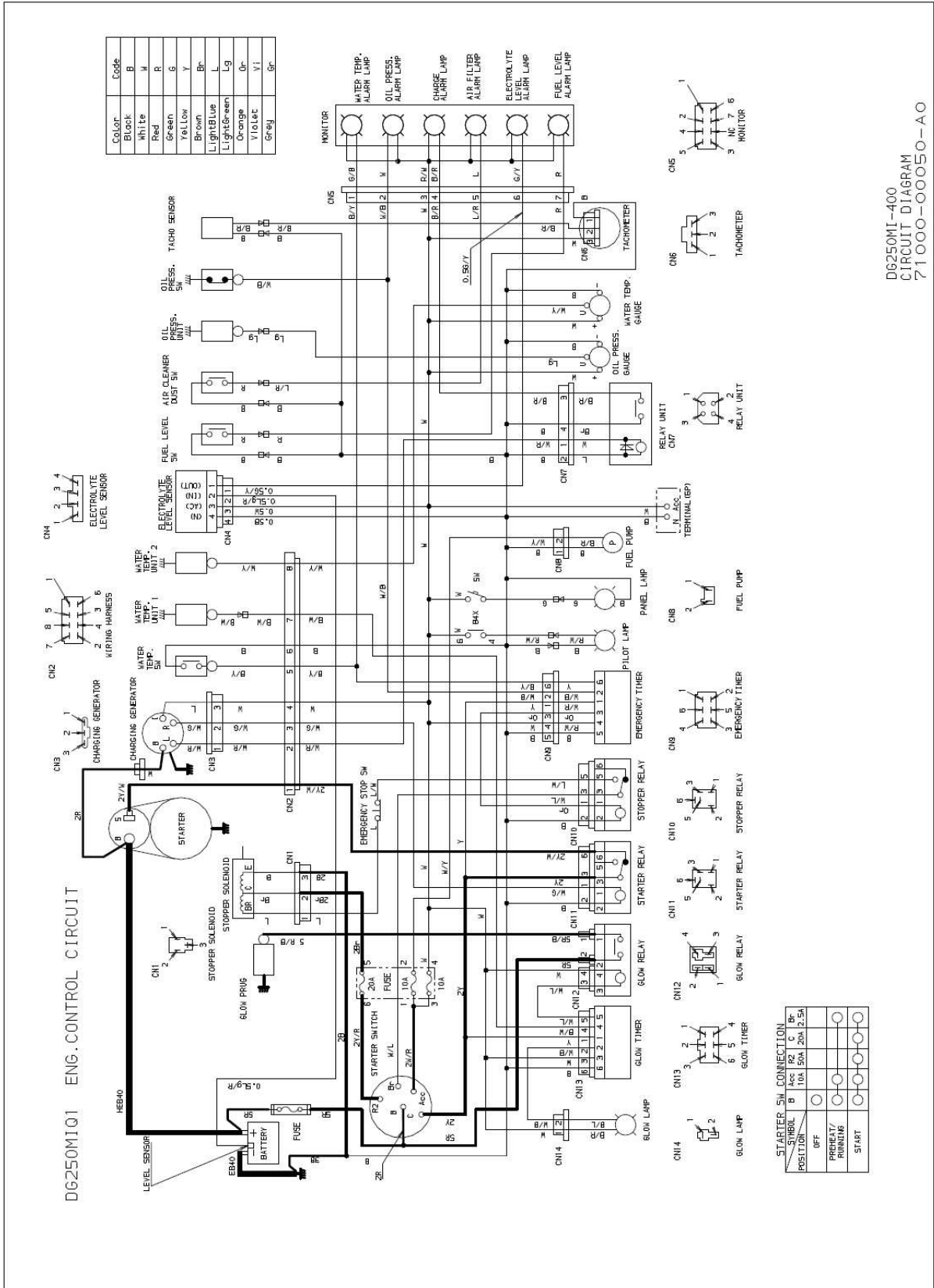


● GENERATOR WIRING



D6250M1-400
CIRCUIT DIAGRAM
71000-00050-B1

● ENGINE WIRING



D6250MI-400
CIRCUIT DIAGRAM
71 000-00050-A 0

MENO